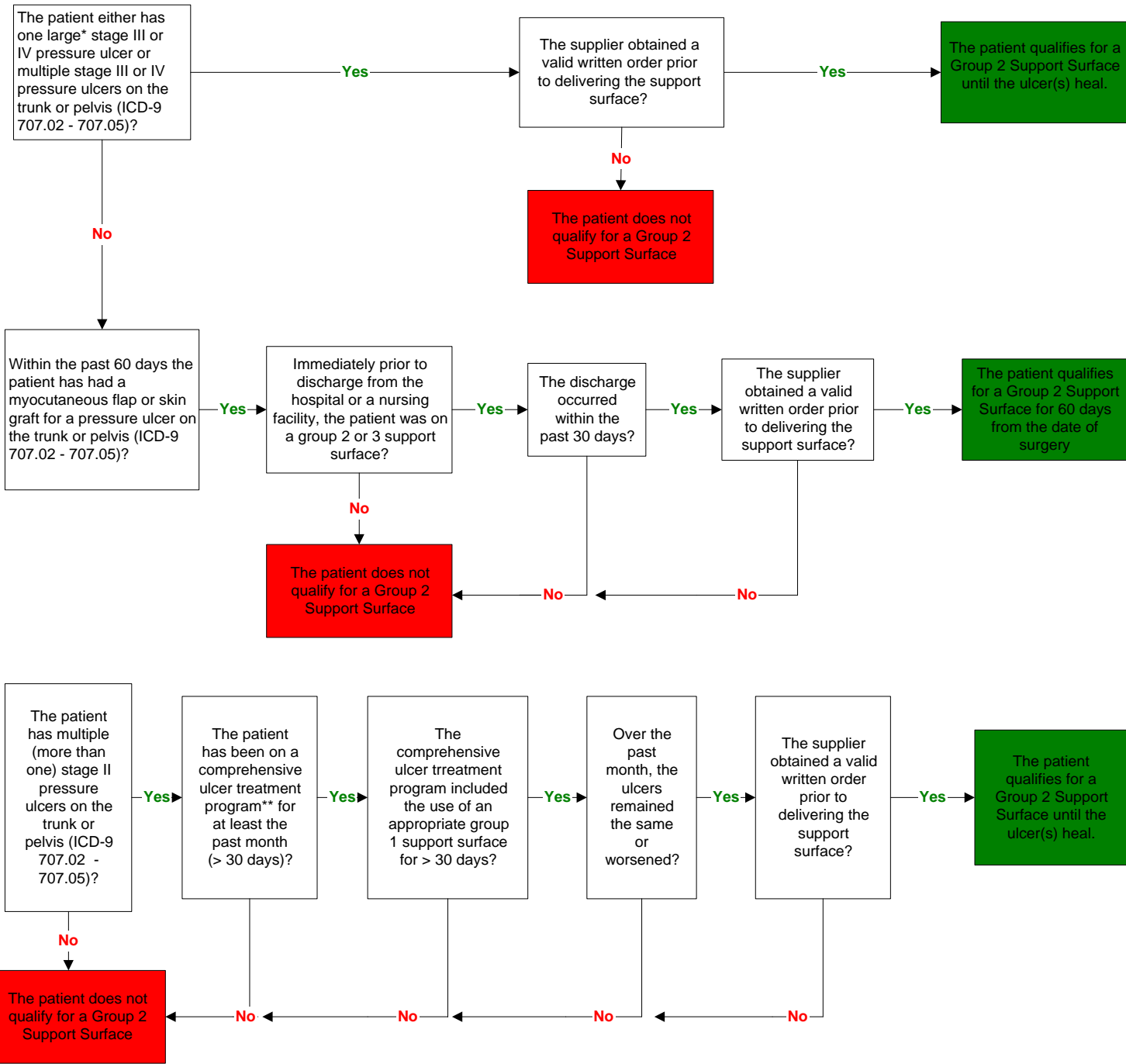


Group 2 Support Surface Coverage



* For the purposes of this policy, a large pressure ulcer is considered to be ≥ 8 sq. cm. (calculated by multiplying ulcer's length X ulcer's width). However, individual consideration may be given to a very small or thin patient or one who has a detailed wound assessment documenting the medical need for a group 2 support surface.

**Please refer to the Local Coverage Determination policy for the requirements of a comprehensive ulcer treatment program.